



STARHOTELS<sup>®</sup>  
PREMIUM

---

E.c.h.o.  
MILANO



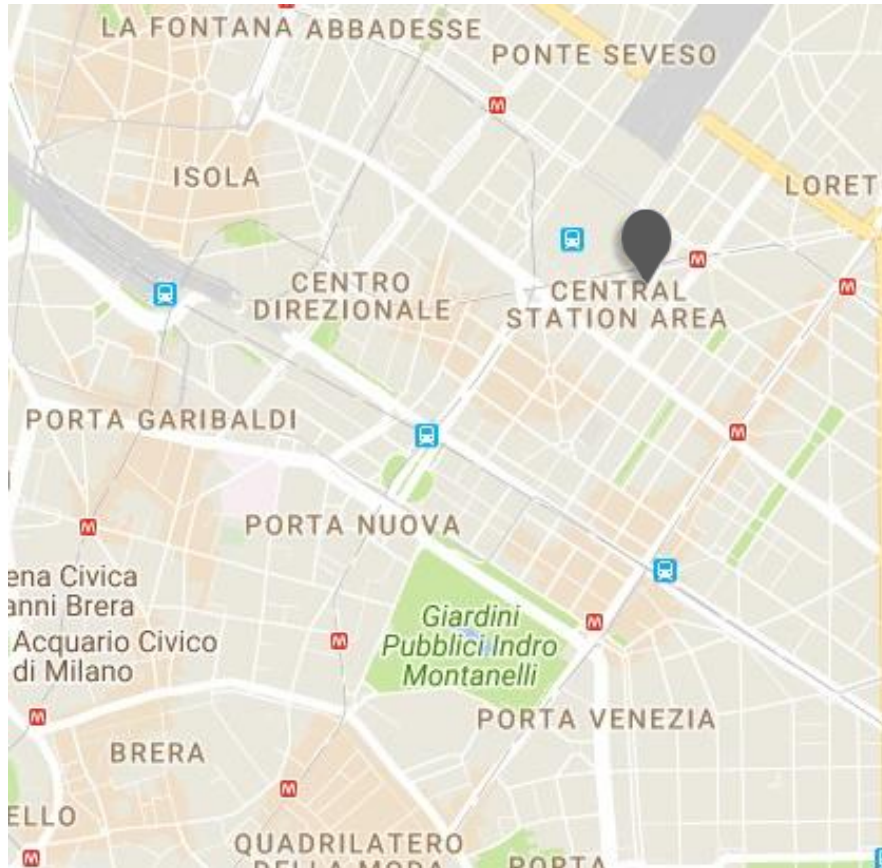


## *Eco contemporary hotel*

Cutting-edge style combined with ethical substance. Our first ecological property, the E.c.ho. brings eco-chic to Italy's fashion capital. Warm, sustainable woods. Organic furnishings. Plenty of natural light. After a day discovering Milano's lively center, step into a calming space where environmental conscience meets elegant design. The E.c.ho. is Green Globe certified and a winner of Hotel Excellence at the European Hotel Design Awards.



Certification of the sustainability performance of travel and tourism businesses



## Location

Next to the Central Railway Station and a few minutes from the city centre

## Distances

### Railway station:

air terminal: Km 0,1

**Highway:** Km 6

### Underground:

MM2 Caiazzo MM2 - MM3 Stazione Centrale

### Airport:

Linate Km 8 - Malpensa Km 50

### Fairgrounds:

Milano (City) Km 4 - Milano (Rho) Km 12

Viale Andrea Doria, 4 - 20124 Milano - ITALY

T +39 02 67891 F +39 02 66713369

[echo.mi@starhotels.it](mailto:echo.mi@starhotels.it)

[starhotels.com](http://starhotels.com)



## Restaurant & Bar

Local, seasonal produces, delicious drinks and a calm, natural atmosphere combine to create an exceptional dining experience.

The Orto Green Food & Mood Restaurant by Eataly serves organic food and a wide selection of vegetables to emphasize the Green theme. The partnership with Eataly ensures careful sourcing of ingredients and a close working relationship with the producers.

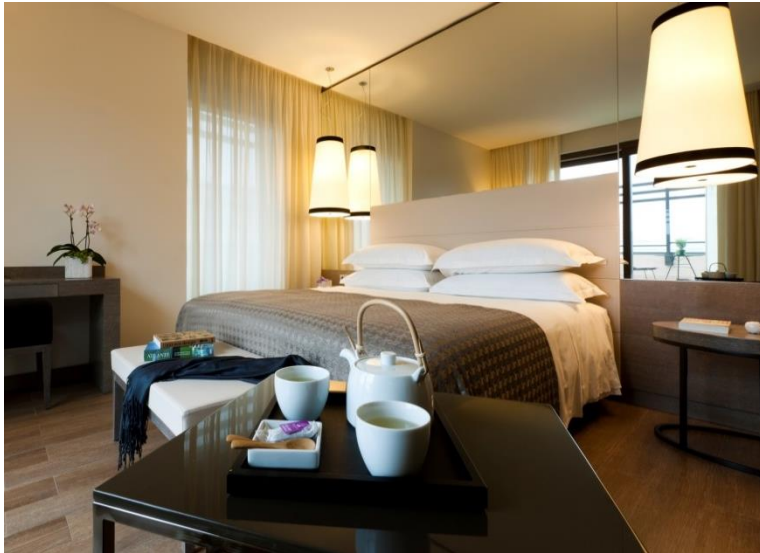




## 143 Rooms

80 Superior  
50 Deluxe  
7 Junior Suite  
6 Suite

Ecologically minded without compromising on style or comfort, the 143 rooms and suites are intelligently designed to optimize energy efficiency.







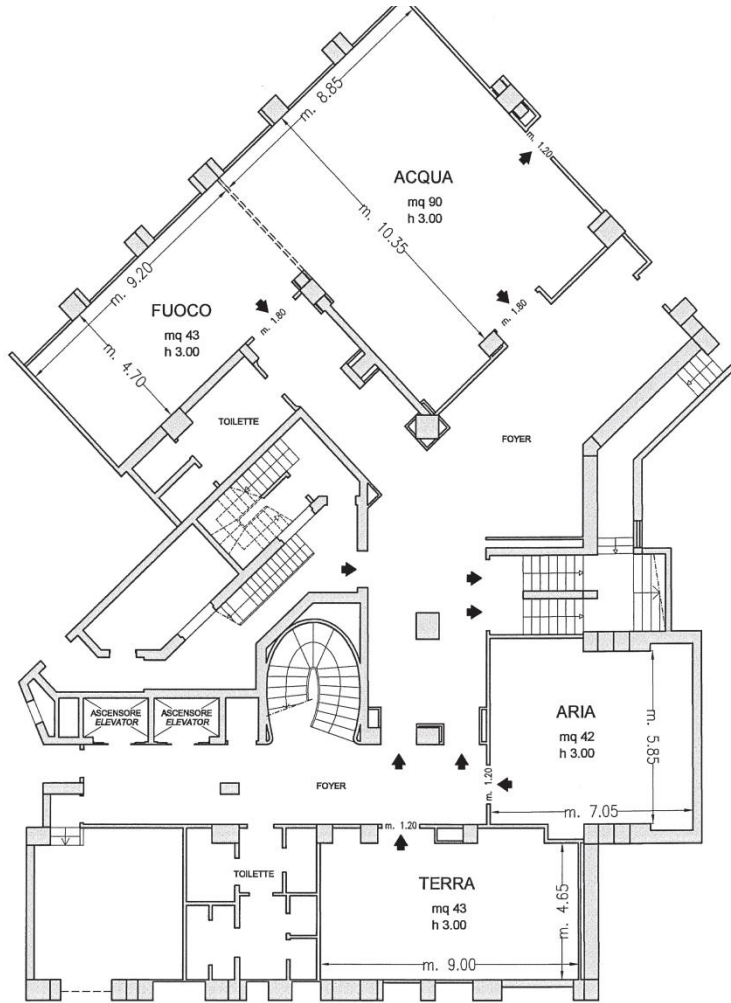
## Meetings & Events

**Meeting rooms: 5**

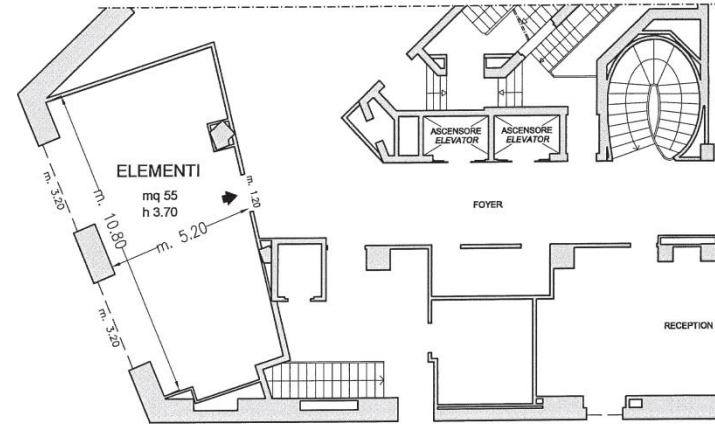
**Capacity (theatre style): 100 max**

Five bright, cosmopolitan conference rooms for up to 100 people and an experienced team will make managing your event a pleasure.





Piano -1 / Basement



Piano Terra / Ground Floor

➤ Uscite di sicurezza / Emergency Exits

----- Finestre / Windows

===== Pareti mobili / Modular Walls

□ Colonne / Columns

# E.c.ho.

MILANO

Sale riunioni Meeting rooms	Area mq Area sq.ft.	Lung. x larg. mt. L x W ft.	altezza mt. height ft.	teatro theatre	banchi scuola class room	Tavolo unico ferro di cavallo conference table/ U-shape	cabaret style^	cocktail reception	banchetto banquet
Elementi °	55 592,01	10,80x5,20 35,43x17,06	3,7 12,13	55	30	30/25	24	50	40
Acqua	95 1022,6	10,35x8,85 33,95x29,03	3 9,84	100	40	40/36	50	100	84
Fuoco	43 462,84	9,20x4,70 30,18x15,42	3 9,84	40	30	22/20	-	30	-
Aria	42 452,08	7,05x5,85 23,12x19,19	3 9,84	30	20	15/12	12	20	15
Terra	43 462,84	9x4,65 29,52x15,25	3 9,84	40	30	22/20	-	30	-

° Luce naturale / Daylight